



ABKO TEC

IWAKO

SIGHT GLASS LEVEL GAUGE



082 547 9989



saleslabkotec@gmail.com



www.abkotec.com



@abkotec



082 547 9989



ABOUT ABKO TEC

ABKO TEC CO., LTD. IS A SPECIALIZED MANUFACTURER AND SUPPLIER OF INDUSTRIAL SIGHT GLASS AND LEVEL GAUGE SOLUTIONS, SERVING A WIDE RANGE OF INDUSTRIES WORLDWIDE. WITH STRONG ENGINEERING EXPERTISE AND MANUFACTURING CAPABILITIES, WE DELIVER RELIABLE PRODUCTS DESIGNED TO MEET DEMANDING PROCESS CONDITIONS.

AT **ABKO TEC**, WE FOCUS ON QUALITY, DURABILITY, AND PERFORMANCE. OUR PRODUCTS ARE MANUFACTURED USING HIGH-GRADE MATERIALS SUCH AS BOROSILICATE GLASS, STAINLESS STEEL, AND CARBON STEEL, ENSURING EXCELLENT RESISTANCE TO TEMPERATURE, PRESSURE, AND CORROSIVE ENVIRONMENTS.

WE OFFER BOTH STANDARD AND CUSTOM-ENGINEERED SOLUTIONS, TAILORED TO MEET SPECIFIC PROJECT REQUIREMENTS, INTERNATIONAL STANDARDS (JIS, ANSI, DIN), AND VARIOUS INDUSTRIAL APPLICATIONS.

WITH A COMMITMENT TO CONTINUOUS IMPROVEMENT AND CUSTOMER SATISFACTION, ABKO TEC STRIVES TO BE A TRUSTED PARTNER FOR PROCESS VISIBILITY AND LEVEL MEASUREMENT SOLUTIONS ACROSS GLOBAL MARKETS.

PRODUCTS "IWAKO" SIGHT GLASS LEVEL GAUGE INDUSTRIAL

- DISC SIGHT GLASS
- TUBE SIGHT GLASS (TUBULAR , REDLINE TUBE SIGHT GLASS)
- REFLEX / TRANSPARENT SIGHT GLASS
- CIRCULAR SIGHT GLASS
- OBOUND WELD PAD LEVEL GAUGE
- TUBE OIL LEVEL INDICATOR DESCRIPTION
- PLUG OIL LEVEL ALUMINIUM
- GAUGE COCK (BRASS GAUGE COCK , STAINLESS STEEL GAUGE COCK)
- SIGHT GLASS FLOW INDICATOR

ABKO TEC LIMITED PARTNERSHIP (HEAD OFFICE)



082 547 9989



sales@abkotec.com



www.strainer-filter.com



www.abkotec.com



@abkotec



082 547 9989

“IWAKO” DISC SIGHT GLASS MAT. BOROSILICATE



DISC OR ROUND SIGHT GLASS TYPE DESCRIPTION

THE DISC SIGHT GLASS (ROUND SIGHT GLASS) IS DESIGNED FOR VISUAL OBSERVATION INSIDE TANKS, VESSELS, AND PROCESS CHAMBERS. INSTALLED ON THE TOP OR SIDE OF THE VESSEL, IT ALLOWS OPERATORS TO INSPECT INTERNAL CONDITIONS SUCH AS LIQUID LEVEL, COLOR, CLARITY, AND PROCESS STATUS WITHOUT OPENING THE SYSTEM. MADE FROM HIGH-QUALITY BOROSILICATE GLASS, IT OFFERS EXCELLENT TRANSPARENCY, THERMAL STABILITY, AND CHEMICAL RESISTANCE FOR INDUSTRIAL APPLICATIONS.

DISC SIGHT GLASS KEY FEATURES

- HIGH-QUALITY BOROSILICATE GLASS FOR CLEAR VISUAL INSPECTION
- SUITABLE FOR INSTALLATION ON THE TOP OR SIDE OF TANKS AND VESSELS
- EXCELLENT RESISTANCE TO HEAT, THERMAL SHOCK, AND CHEMICALS
- STRONG AND DURABLE CONSTRUCTION FOR INDUSTRIAL SERVICE
- ALLOWS SAFE INTERNAL OBSERVATION WITHOUT OPENING THE VESSEL
- AVAILABLE IN VARIOUS SIZES AND MOUNTING DESIGNS

DISC SIGHT GLASS APPLICATIONS

- OBSERVATION WINDOWS FOR TANKS AND PRESSURE VESSELS
- LIQUID LEVEL AND PROCESS CONDITION INSPECTION
- CHEMICAL AND PETROCHEMICAL TANKS
- WATER TREATMENT AND STORAGE SYSTEMS
- FOOD, BEVERAGE, AND PHARMACEUTICAL VESSELS
- GENERAL INDUSTRIAL PROCESS EQUIPMENT

OPTIONAL DESIGN / AVAILABLE OPTIONS

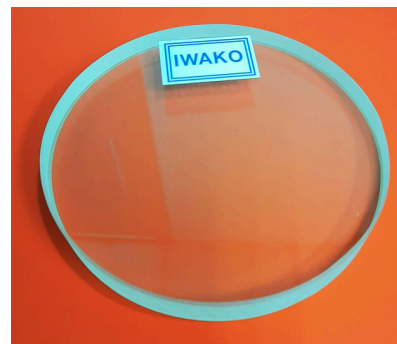
STAINLESS STEEL FRAME OR COVER RING

CARBON STEEL OR STAINLESS STEEL BODY MATERIAL

VARIOUS GASKET MATERIALS SUCH AS PTFE, EPDM, OR GRAPHITE

DIFFERENT GLASS THICKNESSES DEPENDING ON SERVICE CONDITIONS

CUSTOM SIZE AND DRILLING STANDARD AVAILABLE



“IWAKO” TUBULAR GLASS MAT. BOROSILICATE



TUBULAR OR TUBE TYPE DESCRIPTION

THE TUBE SIGHT GLASS (TUBULAR SIGHT GLASS) IS DESIGNED FOR CONTINUOUS VISUAL MONITORING OF LIQUID LEVELS IN TANKS, VESSELS, AND PROCESS SYSTEMS. USING HIGH-QUALITY BOROSILICATE GLASS TUBE, IT PROVIDES CLEAR AND DIRECT INDICATION OF FLUID LEVEL, ALLOWING OPERATORS TO OBSERVE CHANGES IN REAL TIME. ITS SIMPLE AND RELIABLE DESIGN MAKES IT IDEAL FOR VARIOUS INDUSTRIAL APPLICATIONS.

TUBE SIGHT GLASS KEY FEATURES

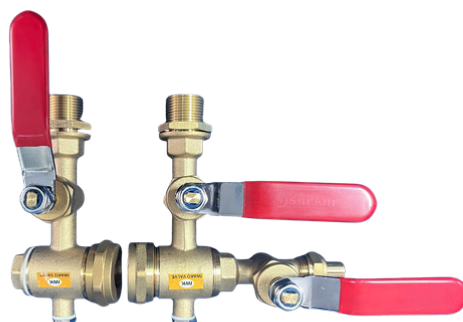
- BOROSILICATE GLASS TUBE FOR CLEAR LEVEL VISIBILITY
- CONTINUOUS REAL-TIME MONITORING OF LIQUID LEVEL
- EXCELLENT RESISTANCE TO TEMPERATURE AND CHEMICAL EXPOSURE
- SIMPLE STRUCTURE FOR EASY INSTALLATION AND MAINTENANCE
- DURABLE CONSTRUCTION FOR LONG SERVICE LIFE
- AVAILABLE IN VARIOUS LENGTHS, SIZES, AND MATERIALS

TUBULAR SIGHT GLASS APPLICATIONS

- TANK AND VESSEL LEVEL INDICATION
- WATER AND WASTEWATER SYSTEMS
- CHEMICAL AND PETROCHEMICAL INDUSTRIES
- BOILER AND UTILITY SYSTEMS
- FOOD & BEVERAGE PROCESSING
- GENERAL INDUSTRIAL LIQUID LEVEL MONITORING

OPTIONAL DESIGN / AVAILABLE OPTIONS

- COVER PLATE : PROVIDES PROTECTION AGAINST EXTERNAL IMPACT AND MECHANICAL DAMAGE
- STEAM / THERMAL JACKETING : MAINTAINS PROCESS TEMPERATURE AND PREVENTS FLUID SOLIDIFICATION
- PROTECTION GUARD : SHIELDS THE GLASS TUBE FROM ACCIDENTAL BREAKAGE AND ENHANCES SAFETY
- LEVEL SCALE : ENABLES CLEAR AND ACCURATE READING OF LIQUID LEVEL
- FLANGE CONNECTIONS : JIS / ANSI / DIN STANDARDS
- COCK VALVE : BRASS GAUGE COCK ,STAINLESS STEEL GAUGE COCK



“IWAKO” REDLINE TUBE SIGHT GLASS MAT. BOROSILICATE



REDLINE TUBE SIGHT GLASS (RED. TUBE SIGHT GLASS) MAT. BOROSILICATE DESCRIPTION

THE RED LINE TUBE SIGHT GLASS IS DESIGNED FOR CLEAR AND ENHANCED LIQUID LEVEL INDICATION USING THE REFRACTION PRINCIPLE. THE BOROSILICATE GLASS TUBE FEATURES A RED LINE AT THE REAR, WHICH CREATES A SHARP VISUAL CONTRAST BETWEEN LIQUID AND VAPOR PHASES. THIS ALLOWS OPERATORS TO EASILY IDENTIFY THE LIQUID LEVEL, EVEN UNDER DIFFICULT LIGHTING OR PROCESS CONDITIONS.

REDLINE TUBE SIGHT GLASS KEY FEATURES

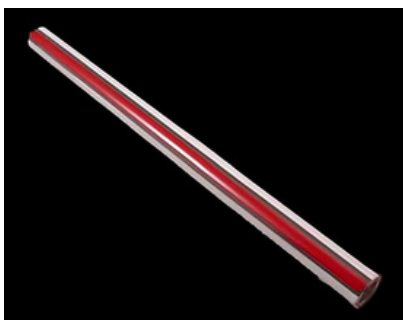
- RED LINE CONTRAST DESIGN FOR IMPROVED LEVEL VISIBILITY
- UTILIZES REFRACTION PRINCIPLE FOR CLEAR PHASE DIFFERENTIATION
- HIGH-QUALITY BOROSILICATE GLASS WITH EXCELLENT THERMAL AND CHEMICAL RESISTANCE
- RELIABLE PERFORMANCE IN VARIOUS INDUSTRIAL ENVIRONMENTS
- SIMPLE AND ROBUST CONSTRUCTION
- SUITABLE FOR LOW TO MEDIUM PRESSURE APPLICATIONS

RED. TUBE SIGHT GLASS APPLICATIONS

- TANK AND VESSEL LIQUID LEVEL INDICATION
- CHEMICAL AND PETROCHEMICAL INDUSTRIES
- BOILER AND UTILITY SYSTEMS
- WATER AND WASTEWATER TREATMENT
- OIL & GAS APPLICATIONS
- GENERAL INDUSTRIAL PROCESS MONITORING

OPTIONAL DESIGN / AVAILABLE OPTIONS

- COVER PLATE : PROVIDES PROTECTION AGAINST EXTERNAL IMPACT AND MECHANICAL DAMAGE
- STEAM / THERMAL JACKETING : MAINTAINS PROCESS TEMPERATURE AND PREVENTS FLUID SOLIDIFICATION
- PROTECTION GUARD : SHIELDS THE GLASS TUBE FROM ACCIDENTAL BREAKAGE AND ENHANCES SAFETY
- LEVEL SCALE : ENABLES CLEAR AND ACCURATE READING OF LIQUID LEVEL
- FLANGE CONNECTIONS : JIS / ANSI / DIN STANDARDS
- COCK VALVE : BRASS GAUGE COCK ,STAINLESS STEEL GAUGE COCK



“IWAKO” REFLEX / TRANSPARENT SIGHT GLASS MAT. BOROSILICATE



REFLEX / TRANSPARENT SIGHT GLASS MAT. BOROSILICATE DESCRIPTION

THE REFLEX AND TRANSPARENT SIGHT GLASS LEVEL GAUGES ARE DESIGNED FOR CONTINUOUS AND ACCURATE LIQUID LEVEL MONITORING IN TANKS, VESSELS, AND PRESSURIZED SYSTEMS.

THE **REFLEX** TYPE UTILIZES PRISM GROOVES TO CREATE A CLEAR CONTRAST BETWEEN LIQUID AND VAPOR WITHOUT EXTERNAL LIGHTING.

THE **TRANSPARENT** TYPE EMPLOYS FLAT GLASS ON BOTH SIDES, ALLOWING DIRECT VISUAL OBSERVATION OF LIQUID LEVEL AND INTERFACES, MAKING IT SUITABLE FOR MORE CRITICAL APPLICATIONS.

REFLEX / TRANSPARENT SIGHT GLASS KEY FEATURES

- HIGH-QUALITY BOROSILICATE GLASS FOR EXCELLENT THERMAL AND CHEMICAL RESISTANCE
- **REFLEX** TYPE: HIGH-CONTRAST VISIBILITY WITHOUT EXTERNAL LIGHT
- **TRANSPARENT** TYPE: DIRECT OBSERVATION OF LIQUID AND INTERFACE LEVELS
- SUITABLE FOR HIGH PRESSURE AND HIGH TEMPERATURE SERVICE
- ROBUST, LEAK-TIGHT BOLTED CONSTRUCTION
- REPLACEABLE GLASS AND SEALING COMPONENTS FOR EASY MAINTENANCE
- AVAILABLE IN VARIOUS SIZES, MATERIALS, AND PRESSURE RATINGS

REFLEX SIGHT GLASS / TRANSPARENT SIGHT GLASS APPLICATIONS

- BOILER DRUM LEVEL INDICATION
- CHEMICAL AND PETROCHEMICAL INDUSTRIES
- POWER GENERATION PLANTS
- OIL & GAS PROCESSING SYSTEMS
- WATER AND WASTEWATER TREATMENT
- GENERAL INDUSTRIAL VESSELS AND TANKS

OPTIONAL DESIGN / AVAILABLE OPTIONS

- JACKETING MATERIAL: CS / SS304 / SS316 / SS316L
- PROTECTION GUARD
- ISOLATION VALVES (TOP & BOTTOM) : BRASS GAUGE COCK ,STAINLESS STEEL GAUGE COCK
- DRAIN / VENT VALVE : BRASS GAUGE COCK ,STAINLESS STEEL GAUGE COCK
- LEVEL SCALE
- CUSTOM CENTER DISTANCE / LENGTH
- CONNECTIONS: FLANGE JIS / ANSI / DIN



“IWAKO” WELDPAD LEVEL GAUGE



CIRCULAR SIGHT GLASS (SIGHT GLASS WINDOW FLANGE-TO-TANK CONNECTION) MAT. BOROSILICATE DESCRIPTION

THE CIRCULAR SIGHT GLASS (SIGHT GLASS WITH FLANGE-TO-TANK CONNECTION) IS DESIGNED FOR DIRECT VISUAL INSPECTION INSIDE TANKS, VESSELS, AND PROCESS EQUIPMENT. INSTALLED VIA A FLANGED CONNECTION, IT PROVIDES A SECURE AND LEAK-TIGHT VIEWING WINDOW FOR MONITORING INTERNAL CONDITIONS SUCH AS LIQUID LEVEL, FLOW BEHAVIOR, COLOR, AND PROCESS STATUS.

MANUFACTURED WITH HIGH-QUALITY BOROSILICATE GLASS, IT OFFERS EXCELLENT TRANSPARENCY, THERMAL RESISTANCE, AND CHEMICAL DURABILITY FOR DEMANDING INDUSTRIAL ENVIRONMENTS.

CIRCULAR SIGHT GLASS KEY FEATURES

- HIGH-QUALITY BOROSILICATE GLASS FOR SUPERIOR VISIBILITY
- FLANGED MOUNTING DESIGN FOR SECURE TANK INSTALLATION
- RESISTANT TO HIGH TEMPERATURE, PRESSURE, AND CORROSIVE MEDIA
- ENABLES SAFE INSPECTION WITHOUT OPENING THE VESSEL
- ROBUST AND DURABLE CONSTRUCTION
- AVAILABLE IN VARIOUS SIZES AND INTERNATIONAL STANDARDS

SIGHT GLASS WINDOW FLANGE-TO-TANK CONNECTION APPLICATIONS

- TANK AND VESSEL INSPECTION WINDOWS
- CHEMICAL AND PETROCHEMICAL PROCESSING
- FOOD & BEVERAGE AND PHARMACEUTICAL INDUSTRIES
- WATER AND WASTEWATER TREATMENT
- OIL & GAS SYSTEMS
- GENERAL INDUSTRIAL PROCESS OBSERVATION

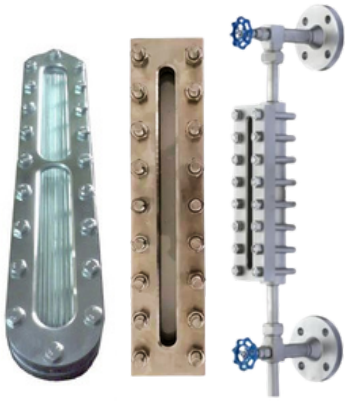
SIGHT GLASS WITH FLANGE FOR TANK SPECIFICATION

- FLANGE MAT. : STAINLESS STEEL , CARBON STEEL
- GLASS MAT. : BOROSILICATE SIGHT GLASS
- GASKET : TEFLON / EPDM / VITON / RUBBER
- BOLT & NUT : CARBON STEEL , STAINLESS STEEL
- FLANGED TYPE - ANSI , JIS , DIN

OPTIONAL DESIGN / AVAILABLE OPTIONS

- DOUBLE GLASS (HIGH SAFETY DESIGN)
- PROTECTIVE COVER OR SHIELD
- SPECIAL COATING FOR AGGRESSIVE MEDIA
- CUSTOM DRILLING AND FLANGE STANDARDS
- NON-STANDARD SIZE AND THICKNESS AVAILABLE

“IWAKO” WELDPAD LEVEL GAUGE



OBROUND WELD PAD LEVEL GAUGE MAT. BOROSILICATE DESCRIPTION

THE OBROUND LEVEL GAUGE (WELD PAD TYPE) IS DESIGNED FOR DIRECT AND RELIABLE LIQUID LEVEL INDICATION IN TANKS AND VESSELS. MOUNTED ON THE SIDE OF THE TANK VIA WELD PAD OR FLANGED CONNECTIONS, IT PROVIDES CONTINUOUS LEVEL MONITORING BASED ON THE COMMUNICATING VESSEL PRINCIPLE.

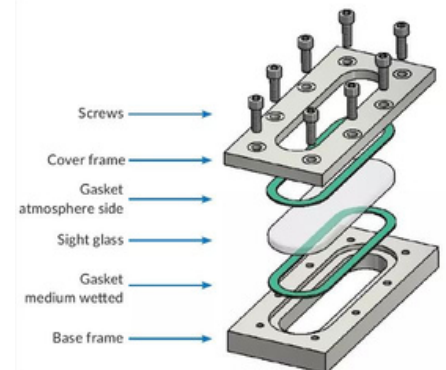
EQUIPPED WITH HIGH-QUALITY BOROSILICATE FLAT GLASS (REFLEX OR TRANSPARENT TYPE), THE GAUGE ENSURES CLEAR VISIBILITY, DURABILITY, AND SAFE OPERATION UNDER INDUSTRIAL CONDITIONS.

OBROUND WELD PAD LEVEL GAUGE KEY FEATURES

- OBROUND FLAT GLASS DESIGN FOR COMPACT AND CLEAR LEVEL INDICATION
- AVAILABLE IN REFLEX OR TRANSPARENT TYPE DEPENDING ON APPLICATION
- HIGH-QUALITY BOROSILICATE GLASS FOR THERMAL AND CHEMICAL RESISTANCE
- SIDE-MOUNTED INSTALLATION (WELD PAD / FLANGED) FOR DIRECT TANK LEVEL READING
- OPTIONAL ISOLATION VALVES FOR SAFE OPERATION AND MAINTENANCE
- ROBUST BOLTED CONSTRUCTION ENSURING LEAK-TIGHT PERFORMANCE
- SUITABLE FOR MEDIUM TO HIGH PRESSURE AND TEMPERATURE SERVICE

OBROUND WELD PAD LEVEL GAUGE APPLICATIONS

- TANK AND VESSEL LIQUID LEVEL INDICATION
- CHEMICAL AND PETROCHEMICAL INDUSTRIES
- BOILER AND UTILITY SYSTEMS
- OIL & GAS PROCESSING
- WATER AND WASTEWATER TREATMENT
- GENERAL INDUSTRIAL PROCESS SYSTEMS



OBROUND WELD PAD LEVEL GAUGE SPECIFICATION

- JACKETING GAUGE BODY : CARBON STEEL / STAINLESS STEEL)
- SIGHT GLASS : REFLEX / TRANSPARENT MAT.BOROSILICATE
- CUSHION / PACKING : FIBER / PTFE PROTECTS GLASS FROM STRESS
- STUD BOLTS & NUTS : CARBON STEEL / SS304 / SS316 AS PER DESIGN REQUIREMENT

OPTIONAL DESIGN / AVAILABLE OPTIONS

- PROTECTION GUARD
- ISOLATION VALVES (TOP & BOTTOM)
- DRAIN VALVE / VENT VALVE
- LEVEL SCALE
- NON-STANDARD LENGTH CUSTOM FABRICATION
- FLANGE CONNECTION JIS / ANSI / DIN OR CUSTOMIZED DRILLING
- PROTECTION SHIELD (OPT.) SAFETY COVER FOR GLASS PROTECTION

“IWAKO” OIL LEVEL INDICATOR



TUBE OIL LEVEL INDICATOR DESCRIPTION

THE OIL LEVEL INDICATOR IS DESIGNED FOR DIRECT VISUAL MONITORING OF OIL LEVELS IN TANKS, RESERVOIRS, AND LUBRICATION SYSTEMS. UTILIZING A TRANSPARENT BOROSILICATE GLASS TUBE, IT PROVIDES CLEAR AND CONTINUOUS INDICATION OF OIL LEVEL, ENSURING PROPER LUBRICATION AND SAFE EQUIPMENT OPERATION. ITS SIMPLE AND COMPACT DESIGN MAKES IT IDEAL FOR VARIOUS INDUSTRIAL MACHINERY AND PROCESS APPLICATIONS.

OIL LEVEL INDICATOR KEY FEATURES

- TRANSPARENT BOROSILICATE GLASS TUBE FOR CLEAR LEVEL VISIBILITY
- REAL-TIME MONITORING OF OIL LEVEL CONDITION
- RESISTANT TO TEMPERATURE, OIL, AND INDUSTRIAL ENVIRONMENTS
- COMPACT AND SIMPLE DESIGN FOR EASY INSTALLATION
- DURABLE CONSTRUCTION FOR LONG SERVICE LIFE
- AVAILABLE IN VARIOUS SIZES AND CONNECTION TYPES

OIL LEVEL INDICATOR APPLICATIONS

- GEARBOXES AND LUBRICATION SYSTEMS
- COMPRESSORS AND PUMPS
- HYDRAULIC AND OIL RESERVOIRS
- INDUSTRIAL MACHINERY
- POWER TRANSMISSION EQUIPMENT
- GENERAL OIL LEVEL MONITORING SYSTEMS

SPECIFICATION OIL LEVEL INDICATOR “IWAKO”

- Body Material : Brass / Stainless Steel
- Protect pipe : Brass / Stainless Steel
- Nut : Brass / Stainless Steel
- Glass Material : หลอดแก้วใส , หลอดแก้วคาดแดง Mat. Borosilicate Glass ความยาวสูงสุด 2 เมตร
- Seal / Gasket : NBR / Viton / EPDM / PTFE

“IWAKO” OIL LEVEL INDICATOR CATALOGUE



“IWAKO” OIL LEVEL INDICATOR



PLUG OIL LEVEL ALUMINIUM DESCRIPTION

THE PLUG OIL LEVEL ALUMINIUM (ROUND OIL LEVEL INDICATOR ALUMINIUM) IS A COMPACT SIGHT GLASS DEVICE DESIGNED FOR QUICK VISUAL INSPECTION OF OIL LEVELS IN GEARBOXES, REDUCERS, AND LUBRICATION SYSTEMS. INSTALLED DIRECTLY INTO THREADED PORTS, IT ALLOWS OPERATORS TO EASILY MONITOR OIL CONDITION AND LEVEL WITHOUT DISASSEMBLY.

FEATURING A TRANSPARENT VIEWING WINDOW WITH A CENTRAL INDICATOR MARK, IT ENSURES CLEAR AND RELIABLE LEVEL INDICATION IN INDUSTRIAL ENVIRONMENTS.

ROUND OIL LEVEL INDICATOR ALUMINIUM KEY FEATURES

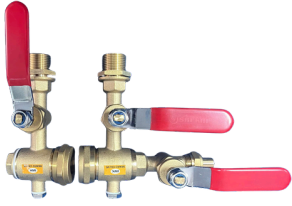
- LIGHTWEIGHT AND DURABLE ALUMINIUM BODY
- CLEAR SIGHT WINDOW WITH LEVEL INDICATOR MARK
- EASY INSTALLATION VIA THREADED CONNECTION
- RESISTANT TO OIL, VIBRATION, AND INDUSTRIAL CONDITIONS
- COMPACT DESIGN SUITABLE FOR LIMITED SPACE
- MAINTENANCE-FREE AND LONG SERVICE LIFE

ROUND OIL LEVEL INDICATOR ALUMINIUM APPLICATIONS

- GEARBOXES AND SPEED REDUCERS
- LUBRICATION AND OIL RESERVOIR SYSTEMS
- PUMPS AND COMPRESSORS
- INDUSTRIAL MACHINERY
- HYDRAULIC SYSTEMS
- GENERAL OIL LEVEL MONITORING

“IWAKO” GAUGE COCK VALVE

BRASS GAUGE COCK DESCRIPTION



THE BRASS GAUGE COCK (LEVER TYPE) IS DESIGNED FOR SAFE ISOLATION AND CONTROL OF LIQUID FLOW IN LEVEL GAUGE SYSTEMS. COMMONLY INSTALLED AT THE TOP AND BOTTOM OF TUBULAR OR FLAT GLASS LEVEL GAUGES, IT ALLOWS OPERATORS TO ISOLATE THE GAUGE FOR MAINTENANCE, DRAINING, OR EMERGENCY SHUT-OFF.

MANUFACTURED FROM HIGH-QUALITY BRASS, IT ENSURES RELIABLE PERFORMANCE, CORROSION RESISTANCE, AND LONG SERVICE LIFE IN INDUSTRIAL APPLICATIONS.

BRASS GAUGE COCK KEY FEATURES

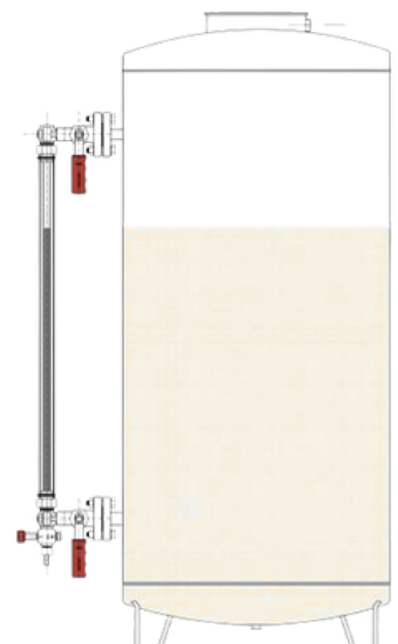
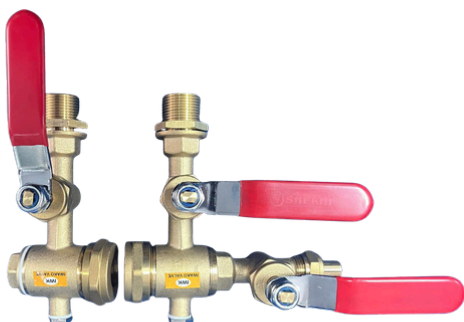
- DURABLE BRASS CONSTRUCTION FOR CORROSION RESISTANCE
- LEVER-OPERATED VALVE FOR QUICK AND EASY OPERATION
- PROVIDES SAFE ISOLATION OF LEVEL GAUGE SYSTEM
- INTEGRATED DRAIN / VENT FUNCTION (DEPENDING ON DESIGN)
- COMPACT DESIGN FOR EASY INSTALLATION
- SUITABLE FOR LOW TO MEDIUM PRESSURE APPLICATIONS

BRASS GAUGE COCK APPLICATIONS

- TUBULAR AND FLAT GLASS LEVEL GAUGE SYSTEMS
- BOILERS AND UTILITY EQUIPMENT
- WATER AND LIQUID STORAGE TANKS
- CHEMICAL AND PROCESS INDUSTRIES
- OIL AND LUBRICATION SYSTEMS
- GENERAL INDUSTRIAL APPLICATIONS

OPTIONAL DESIGN / AVAILABLE OPTIONS

- COVER PLATE
- JACKETING
- PROTECTION GUARDS
- SCALE
- TUBE SIGHT GLASS
- FLANGE CONNECTION JIS , ANSI , DIN



“IWAKO” GAUGE COCK VALVE “IWAKO”

STAINLESS STEEL GAUGE COCK HANDWHEEL TYPE DESCRIPTION



THE STAINLESS STEEL GAUGE COCK (HANDWHEEL TYPE) IS DESIGNED FOR PRECISE ISOLATION AND CONTROL OF FLUID FLOW IN LEVEL GAUGE SYSTEMS. TYPICALLY INSTALLED AT THE TOP AND BOTTOM OF TUBULAR OR FLAT GLASS LEVEL GAUGES, IT ENABLES SAFE OPERATION, MAINTENANCE, AND SYSTEM SHUTDOWN.

CONSTRUCTED FROM HIGH-QUALITY STAINLESS STEEL, IT OFFERS EXCELLENT CORROSION RESISTANCE AND DURABILITY FOR DEMANDING INDUSTRIAL ENVIRONMENTS.

STAINLESS STEEL COCK KEY FEATURES

- STAINLESS STEEL SS316
- HANDWHEEL OPERATION FOR PRECISE AND CONTROLLED OPENING/CLOSING
- ENSURES SAFE ISOLATION OF LEVEL GAUGE SYSTEM
- SUITABLE FOR HIGH PRESSURE AND HIGH TEMPERATURE APPLICATIONS
- ROBUST AND LEAK-TIGHT DESIGN
- LONG SERVICE LIFE WITH MINIMAL MAINTENANCE

STAINLESS STEEL GAUGE COCK APPLICATIONS

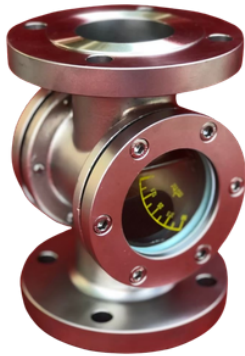
- TUBULAR AND FLAT GLASS LEVEL GAUGE SYSTEMS
- CHEMICAL AND PETROCHEMICAL INDUSTRIES
- BOILERS AND STEAM SYSTEMS
- OIL & GAS PROCESSING
- WATER AND WASTEWATER TREATMENT
- GENERAL INDUSTRIAL APPLICATIONS

OPTIONAL DESIGN / AVAILABLE OPTIONS

- COVER PLATE
- JACKETING
- PROTECTION GUARDS
- SCALE
- TUBE SIGHT GLASS
- FLANGE CONNECTION JIS , ANSI , DIN



“IWAKO” SIGHT GLASS FLOW INDICATOR



SIGHT GLASS FLOW INDICATOR DESCRIPTION

THE SIGHT GLASS FLOW INDICATOR IS DESIGNED FOR VISUAL MONITORING OF FLUID FLOW WITHIN PIPELINES AND PROCESS SYSTEMS. IT ALLOWS OPERATORS TO OBSERVE FLOW CONDITIONS SUCH AS PRESENCE, DIRECTION, AND CLARITY IN REAL TIME.

EQUIPPED WITH A TRANSPARENT VIEWING WINDOW AND OPTIONAL INTERNAL ROTOR OR FLAPPER, IT PROVIDES A SIMPLE AND RELIABLE METHOD FOR CONFIRMING FLOW WITHOUT THE NEED FOR COMPLEX INSTRUMENTATION.

SIGHT GLASS FLOW INDICATOR KEY FEATURES

- CLEAR VISUAL INDICATION OF FLOW CONDITION
- TRANSPARENT SIGHT GLASS WINDOW FOR REAL-TIME MONITORING
- OPTIONAL ROTOR / FLAPPER INDICATOR FOR FLOW MOVEMENT DETECTION
- SUITABLE FOR LIQUID OR GAS APPLICATIONS
- ROBUST CONSTRUCTION FOR INDUSTRIAL ENVIRONMENTS
- AVAILABLE IN VARIOUS SIZES, MATERIALS, AND CONNECTION TYPES

SIGHT GLASS FLOW INDICATOR APPLICATIONS

- CHEMICAL AND PETROCHEMICAL INDUSTRIES
- WATER AND WASTEWATER TREATMENT SYSTEMS
- OIL & GAS PROCESSING
- FOOD & BEVERAGE PRODUCTION
- COOLING AND LUBRICATION SYSTEMS
- GENERAL INDUSTRIAL PIPELINES

SPECIFICATION SIGHT GLASS FLOW INDICATOR “IWAKO”

- BODY MATERIAL : CARBON STEEL / STAINLESS STEEL (SS304 / SS316 / SS316L)
- SIGHT GLASS MATERIAL : BOROSILICATE GLASS
- INTERNAL INDICATOR : ROTOR / FLAPPER / DRIP TUBE (OPTIONAL)
- NOMINAL SIZE : DN50 - DN200 (OR CUSTOM)
- CONNECTION TYPE: FLANGED / THREADED (BSP / NPT) / WELDED
- FLANGE STANDARD : JIS / ANSI / DIN
- SEALING MATERIAL : PTFE / GRAPHITE / EPDM / VITON

“IWAKO” SIGHT GLASS FLOW INDICATOR CATALOGUE

